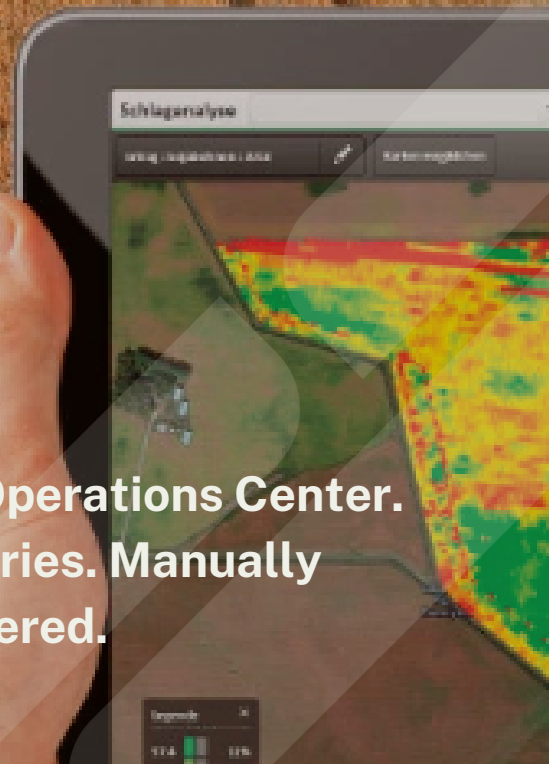


# OPERATIONS CENTER

## Boundary Creation

How to edit and also create a boundary in Operations Center. Use this guide to fix small issues in boundaries. Manually creating and editing boundaries is also covered.

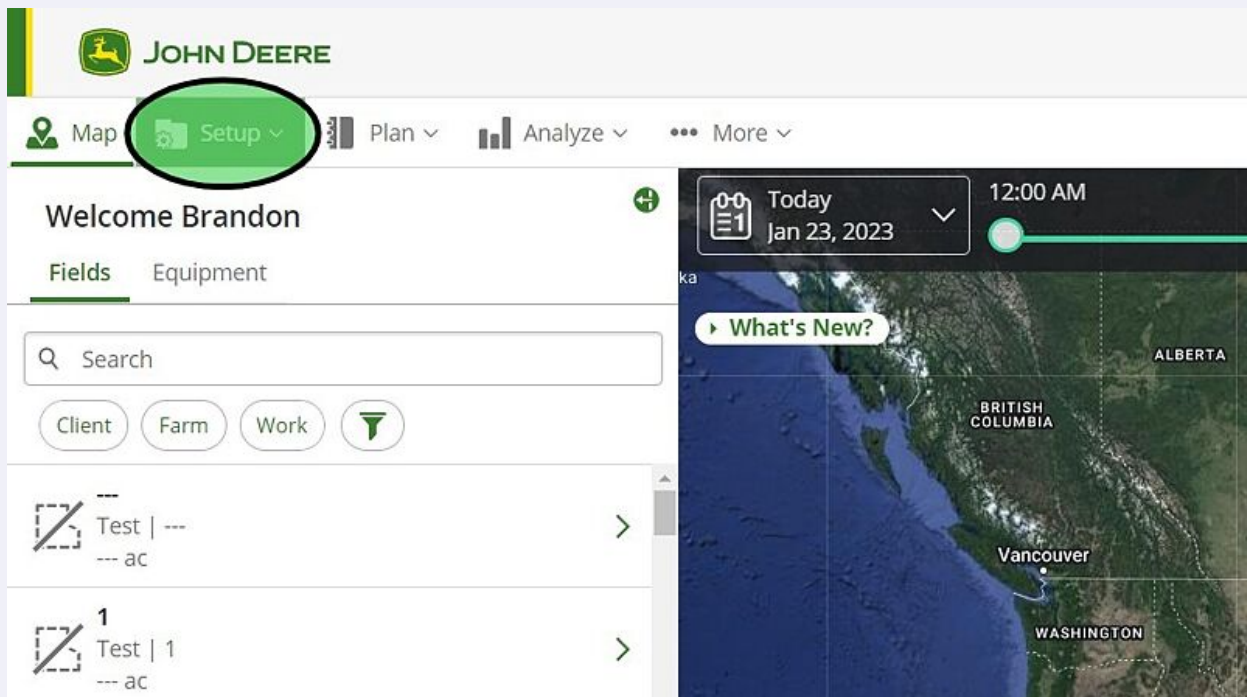


# Operations Center - Editing and Creating Boundaries

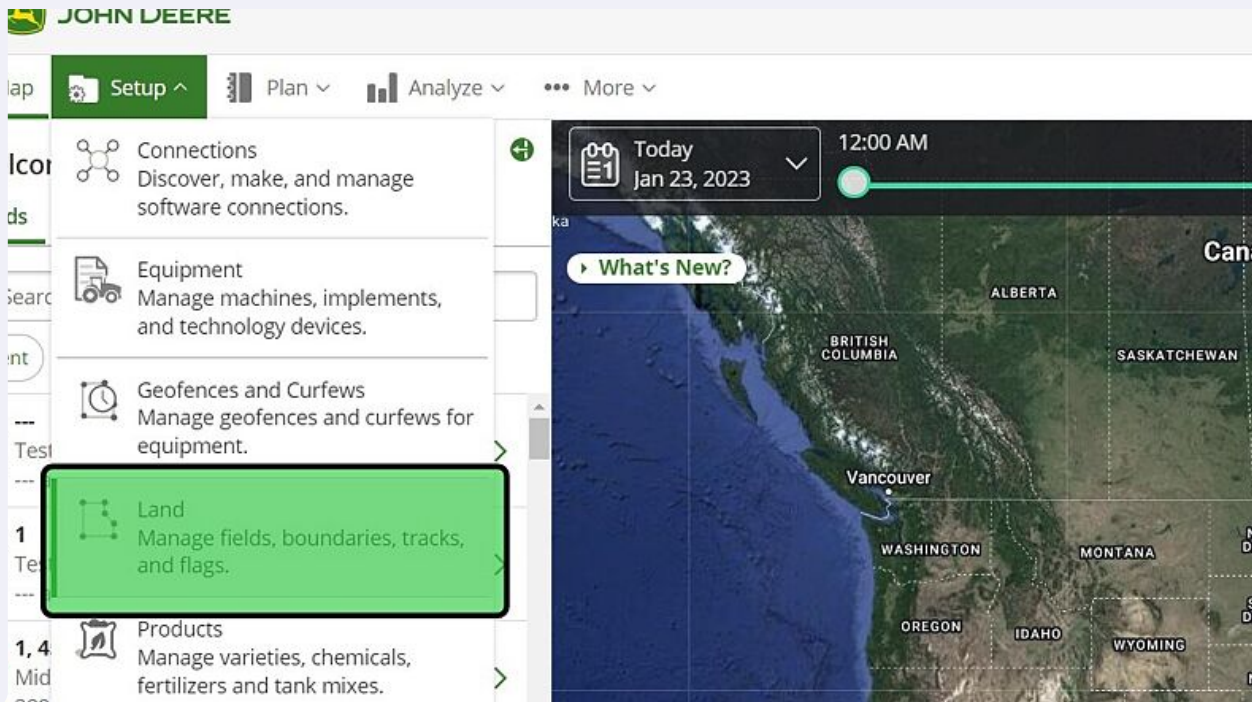
How to edit and also create a boundary in Operations Center. Use this guide to fix small issues in boundaries. Manually creating and editing boundaries is also covered

- 1 Navigate to Operations Center and the organization with the boundary the user wishes to edit.

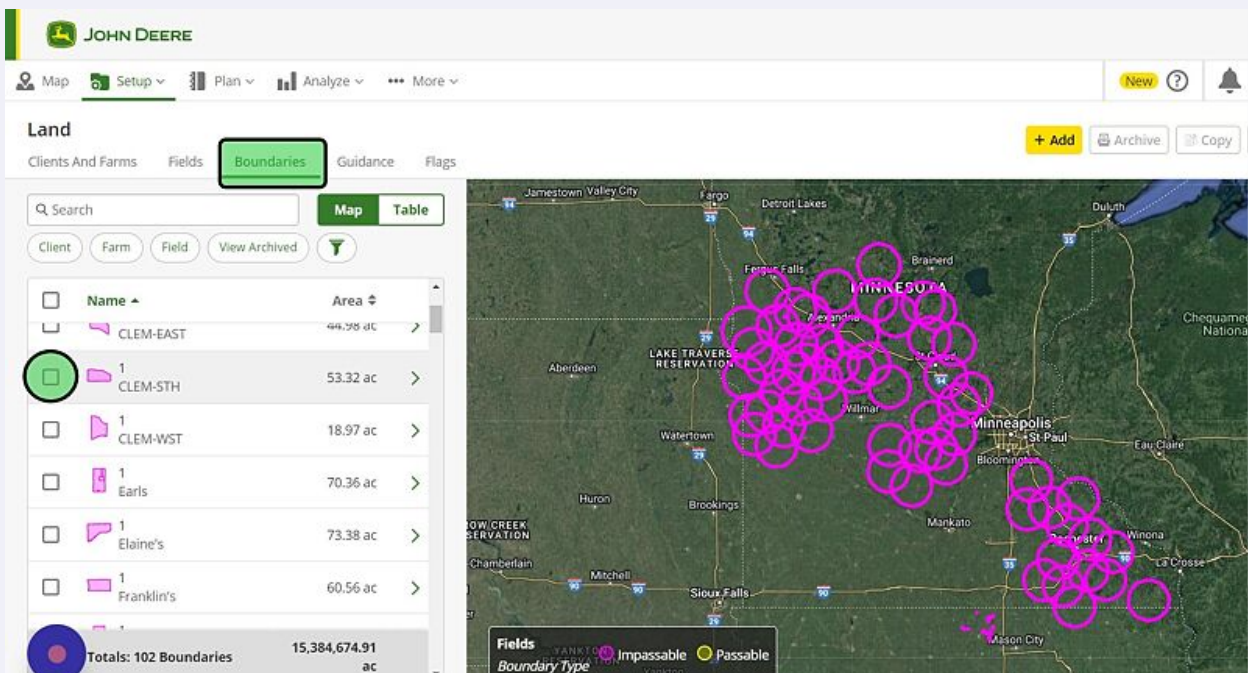
- 2 Select "Setup"



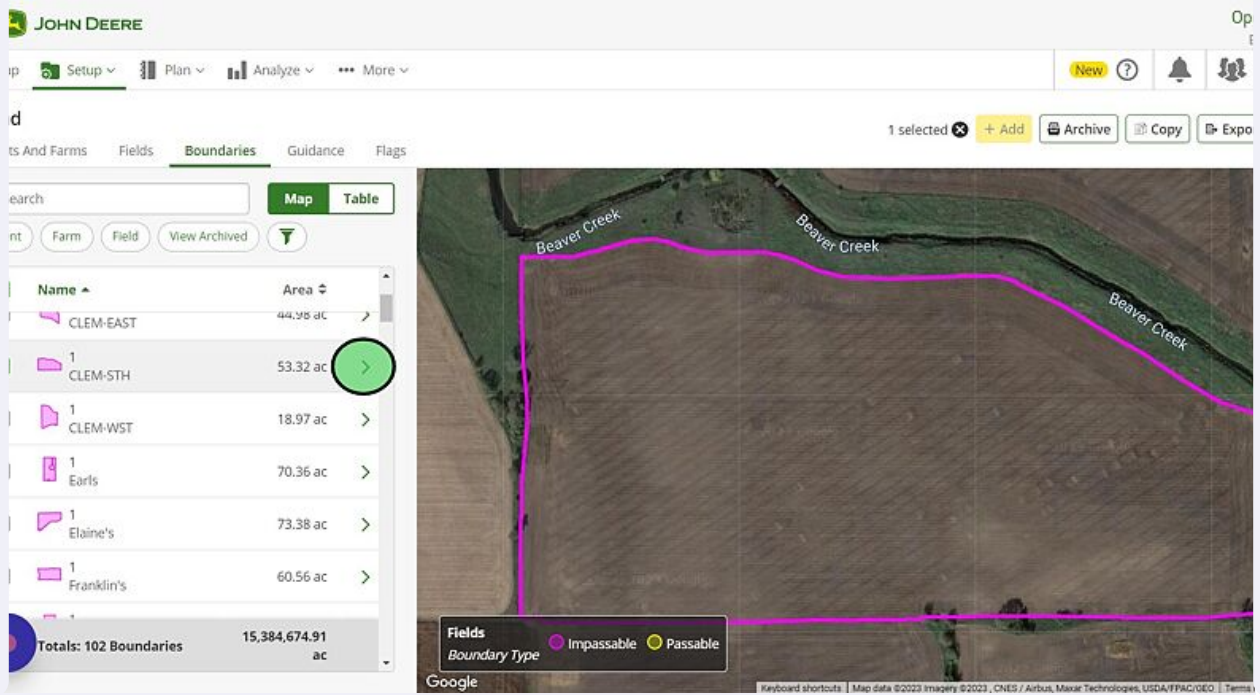
### 3 Select "Land"



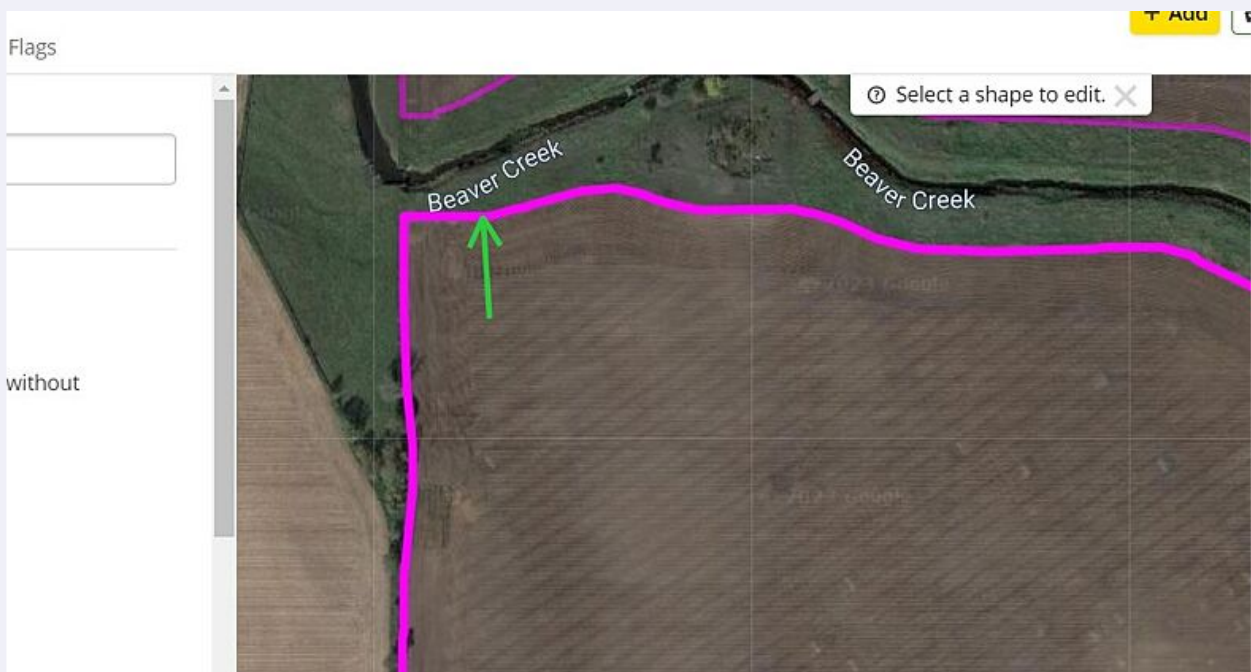
### 4 Under the boundaries menu, check the box of the boundary the user wishes to edit. This will zoom in on the boundary and will be shown in the next step.



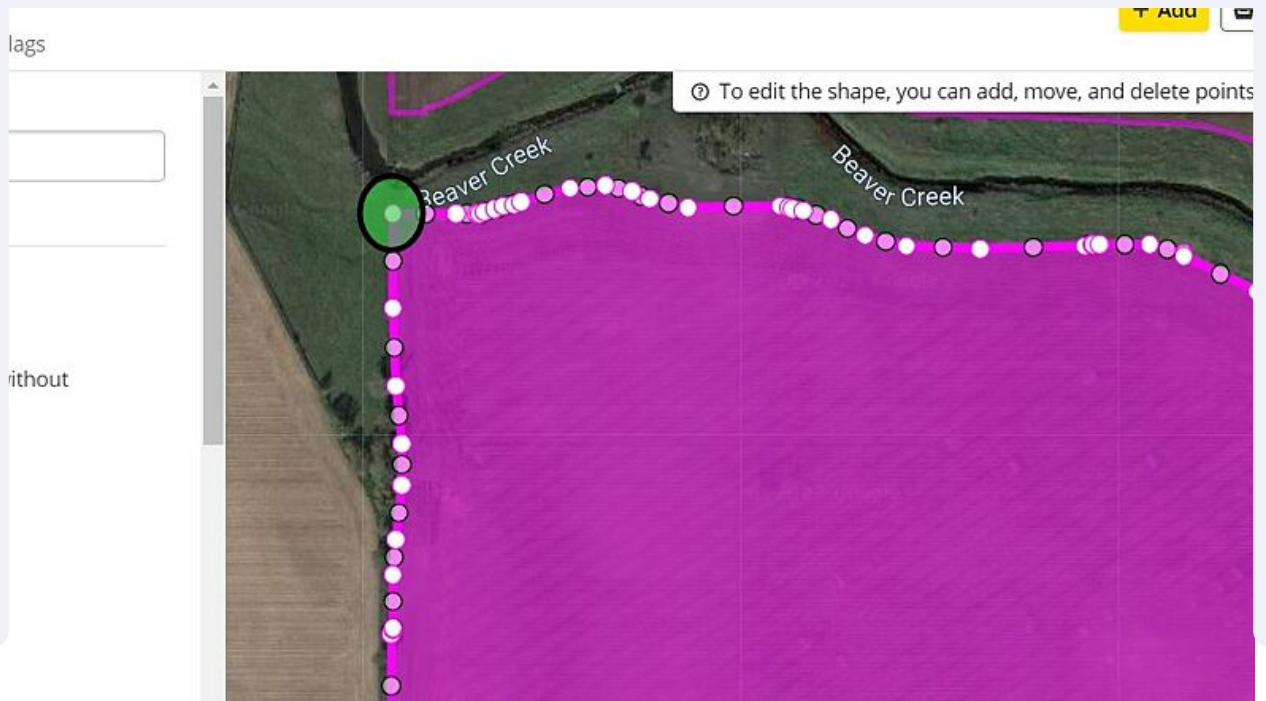
5 Select the arrow next to the boundary.



6 Click on the boundary to manually edit



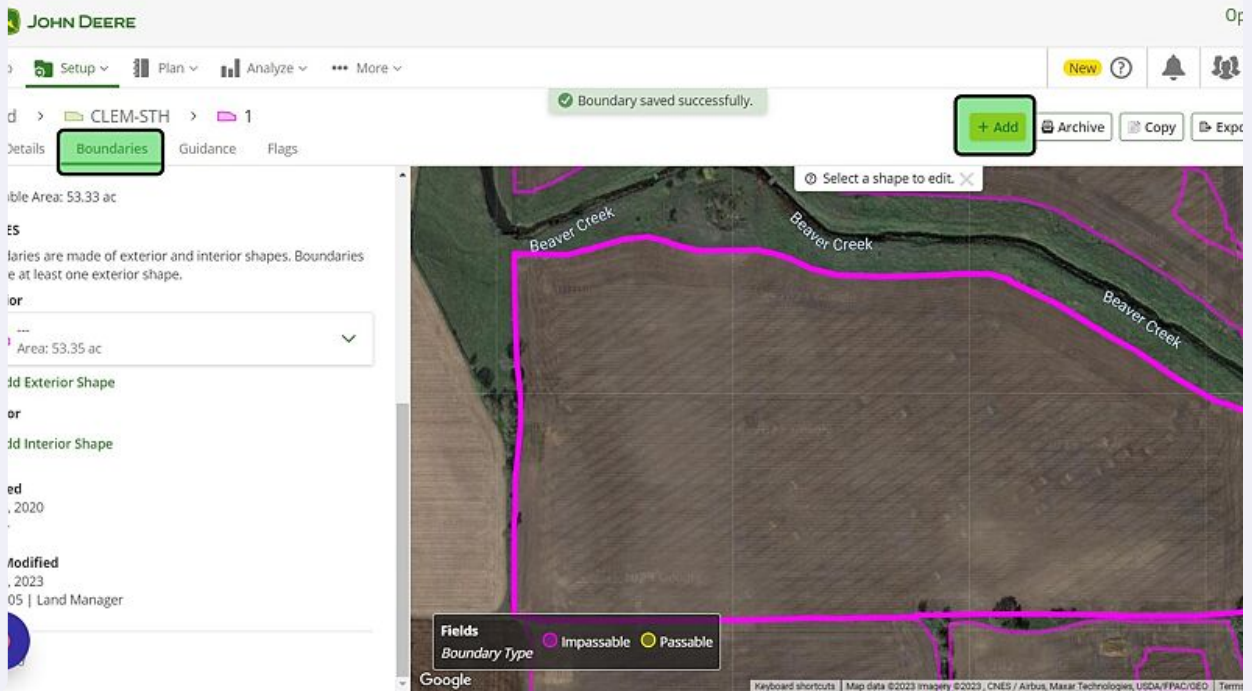
## 7 White dots and be moved or deleted



Creating a New Boundary from Previous Work

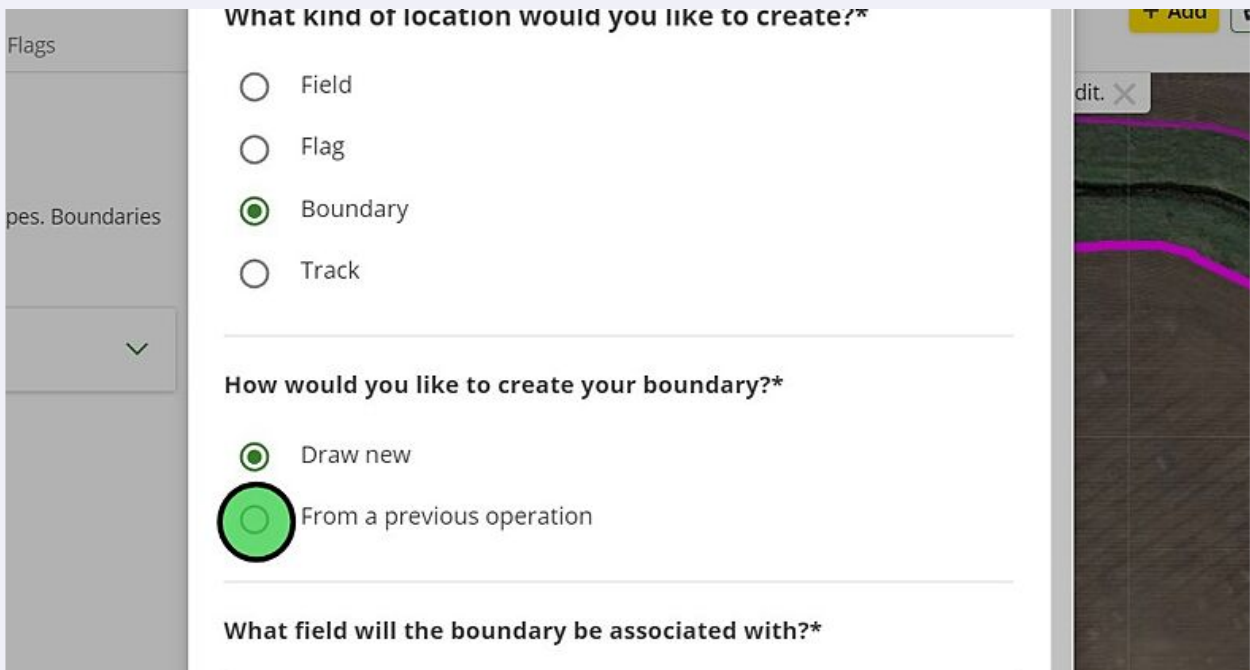
8

Under the Boundary section of the field user wishes to create a new boundary for, select "Add"



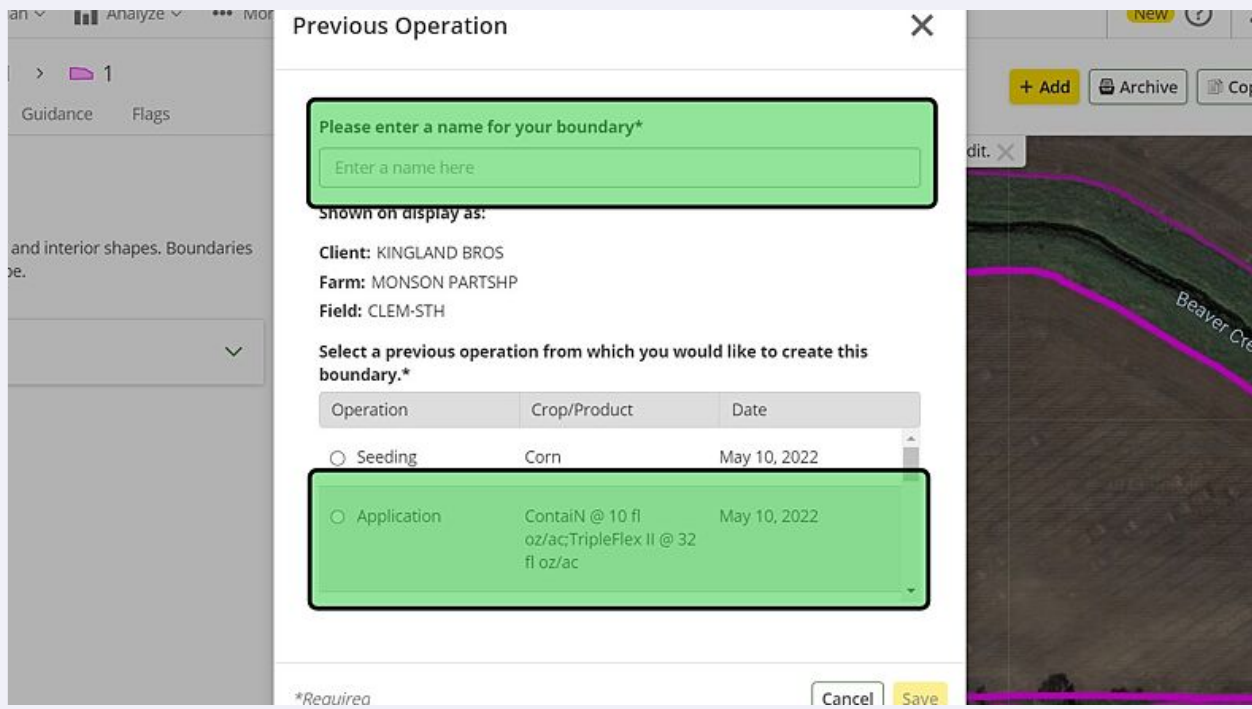
9

Click the "From a previous operation" field. and select "Next"



10

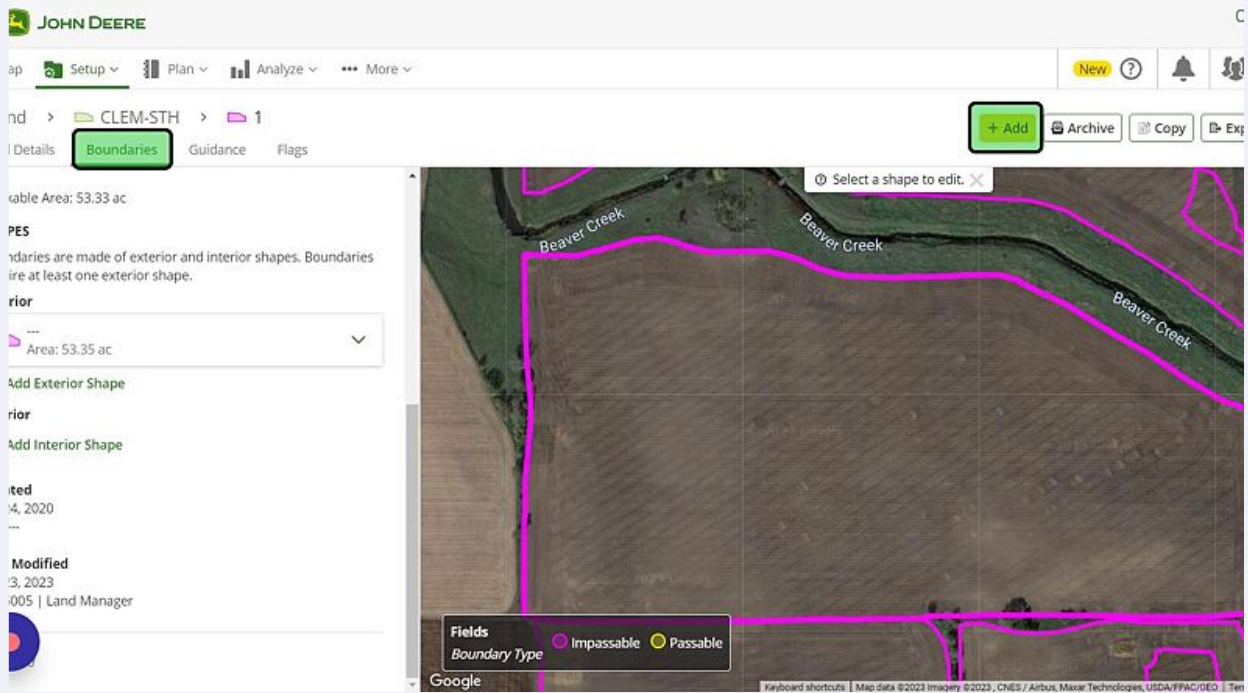
Find a previous operation that resembles the boundary the user wishes for the field. After selecting an operation, an example of the possible boundary will show up below. Once selecting the previous operation to create a boundary from, name the boundary.



## Manually Drawing a New Boundary

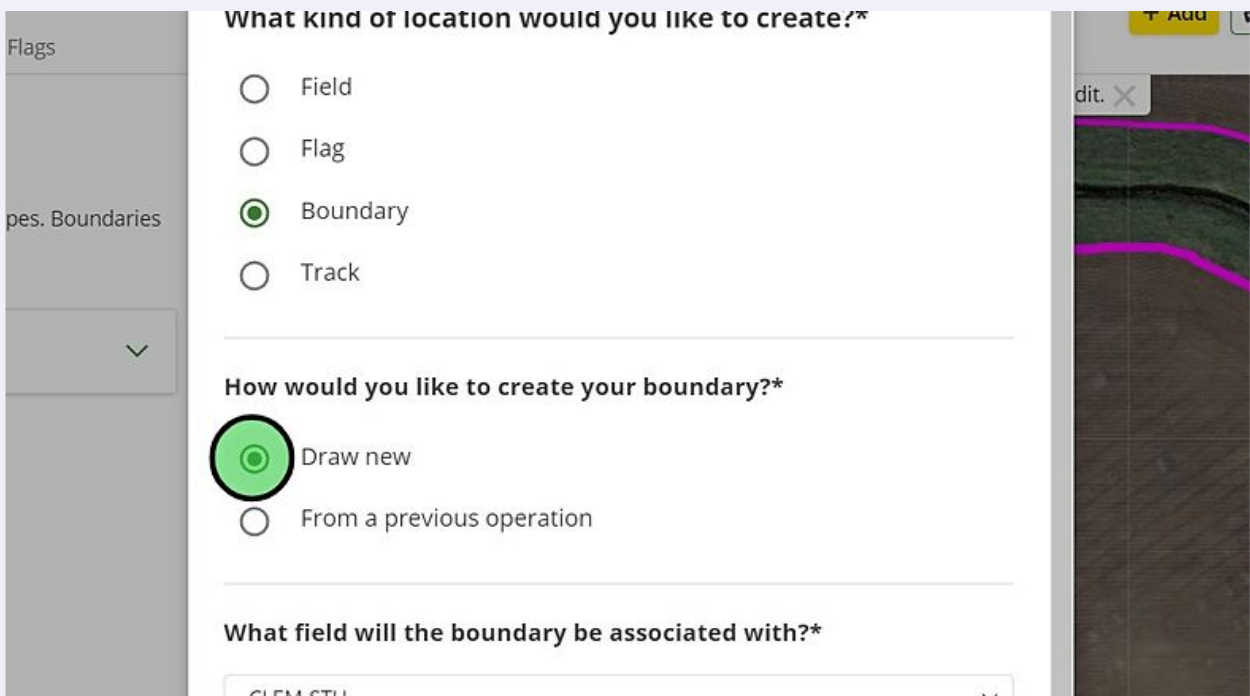
11

Under the Boundary section of the field user wishes to create a new boundary for, select "Add"

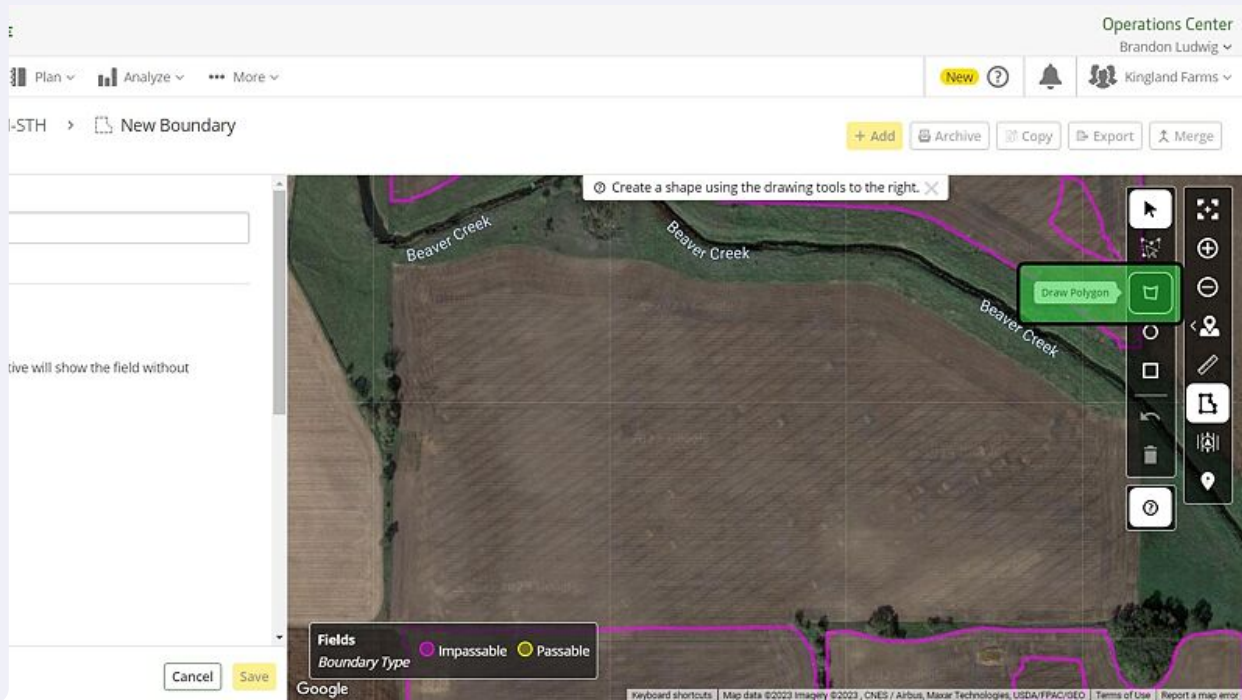


12

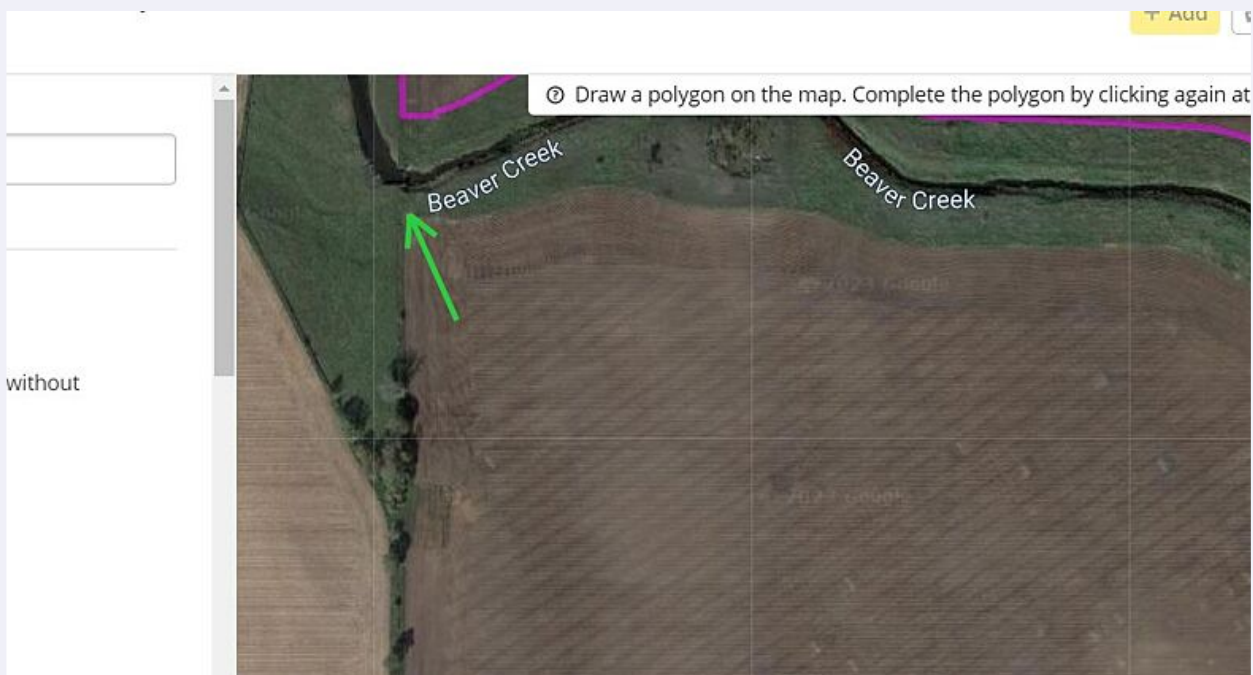
Select the "Draw new" field and then select "Next"



13 Select the "Draw Polygon" icon on the right side of the screen

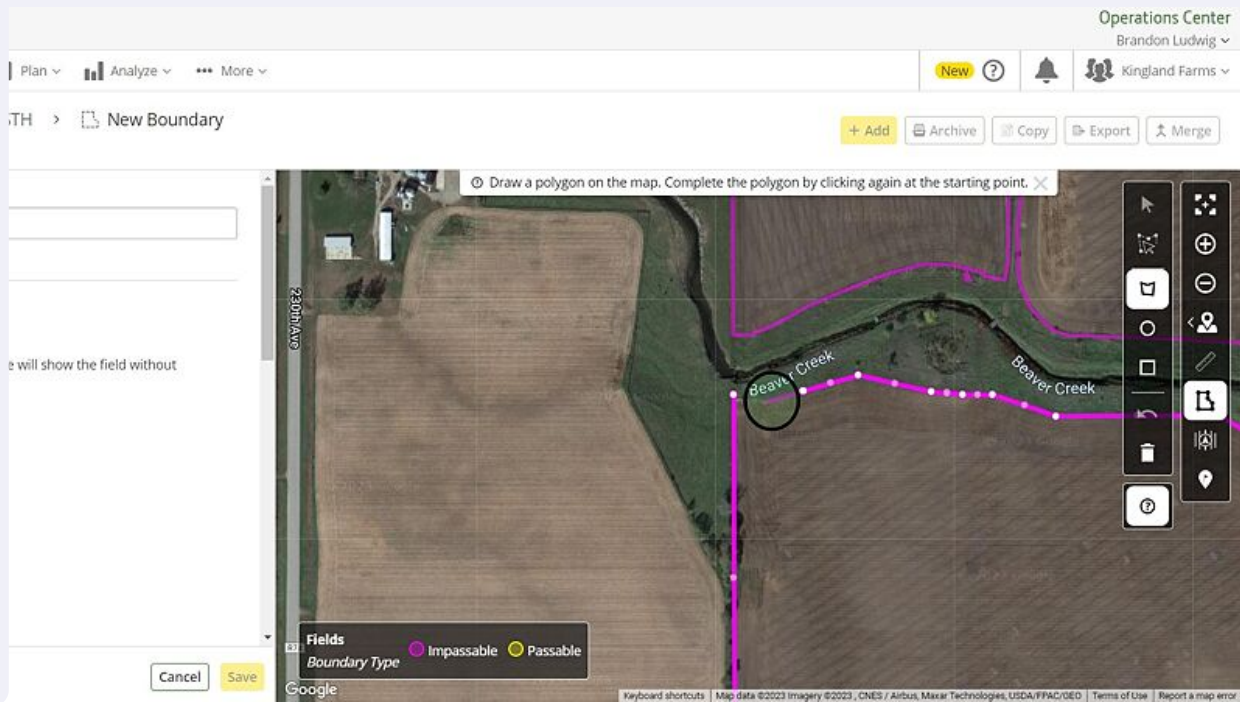


14 Left Click on a point where user wishes to begin the boundary



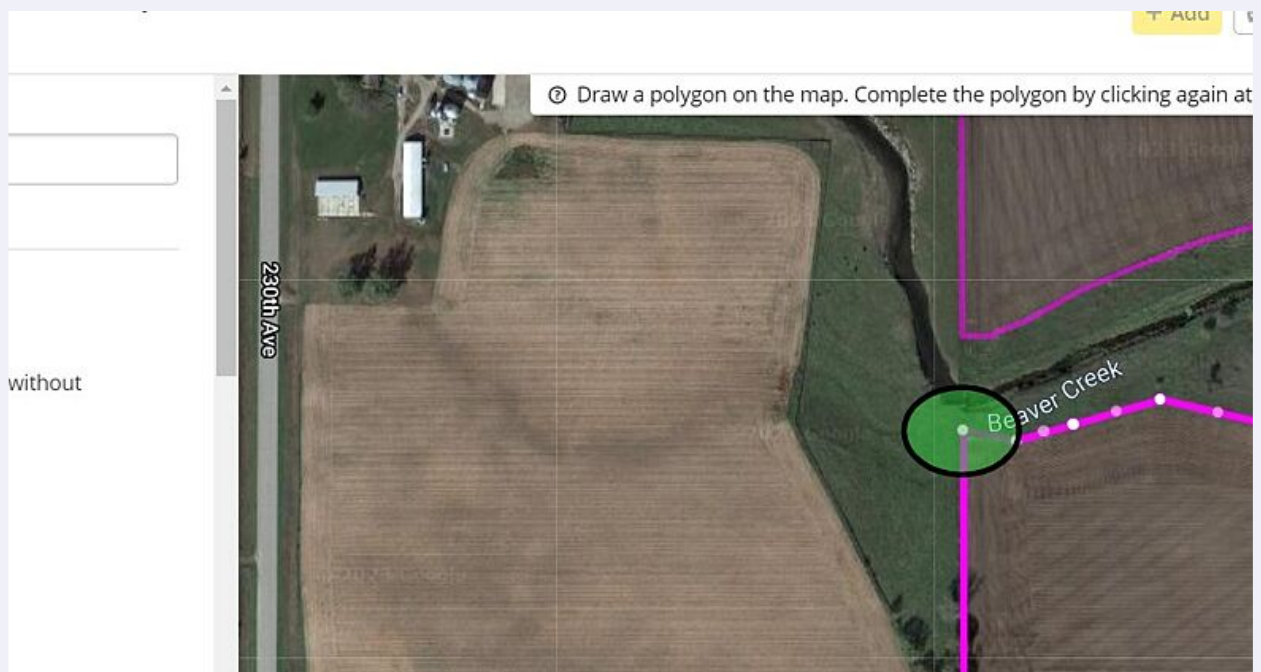
15

Continue left clicking around the area and create a polygon shape around the edges of the field.



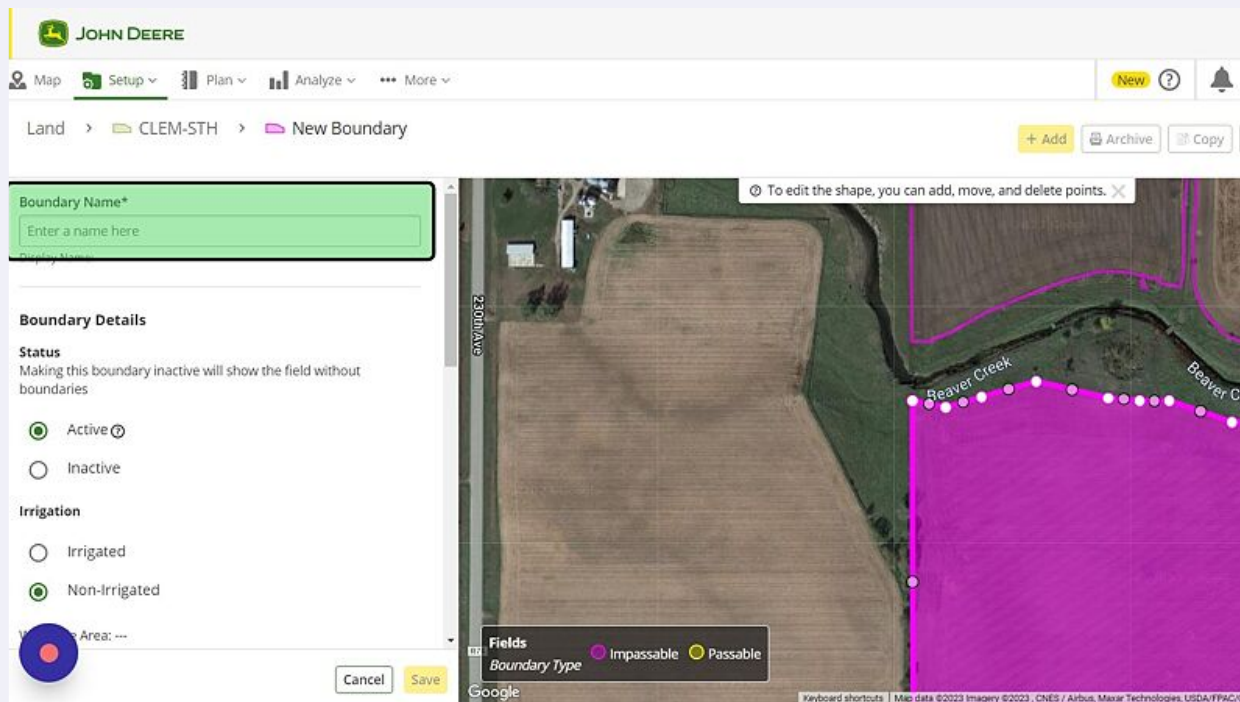
16

Once finished, click on white dot or double click to complete the boundary.



17

Click the "Boundary Name\*" field and name the boundary. Be specific on how the boundary was created. Ex. 2023 Hand Drawn on Ops Center.



18

Verify boundary is Active and then select "Save"